

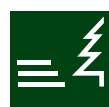
FENDT

Industry, Roads & Environment





Grounds maintenance
 Golf course maintenance
 Park maintenance
 Horticulture
 Grassland maintenance
 Mowing large areas



Forestry | Brush
 Hedge maintenance
 Brush maintenance
 Forestry
 Wood chip production
 Shredding bushes



Construction | Transport
 Transport
 Roadside maintenance
 Building construction
 Path and road construction
 Environmental technology



Winter maintenance
 Winter maintenance
 Clearing and spreading
 Snow blowing

Fendt Vario. Perfect for your requirements.

You can fully utilise the performance capacity of Fendt tractors from spring until winter. The all-round machines feature convincing high-tech solutions and exceptional flexibility in all operations.

Big in green spaces

You always find the right tractor at Fendt for the maintenance of green spaces – whether for golf course or park maintenance, for verge mowing or for the maintenance of large areas. Its outer width starts at only 107 cm, so the narrow and very agile Fendt 200 VFP feels right at home on cycling and walking paths. With their high flexibility and endurance, the Fendt 200, 300 and 500 Vario are ideal for all municipal jobs. Its big brothers, the Fendt 700, 800 and 900 Vario, mow larger areas quickly and precisely.



Power in the woods

Whether working in the forest or on hedges, you can make a lot happen with a Fendt: a Fendt Vario with four-wheel drive and continuously variable transmission can be used flexibly in any terrain. The tractors, ranging from 70 to 240 hp, are the specialists for hedge and brush maintenance, for example, for operations with a boom-mounted hedge trimmer. The high-horsepower tractors with up to 390 hp are powerful machines for wood chip production and wood mulching operations – optionally available with a fully integrated reversing driver station.

Power, traction and flexibility

Strength, flexibility and load carrying capacity are required in the construction industry and for transport. The Fendt high-horsepower tractors prove themselves here with high performance paired with manoeuvrability and versatility. Transport work is completed with ease at a top speed of 60 km/h and with high ride comfort. The tractors deliver excellent traction in unpaved terrain. The high material handling capacity of the large Fendt tractors is a great benefit in civil engineering projects and the high PTO output and hydraulic capacity are ideal for recultivation and soil stabilisation work. Moreover, Fendt is now the only tractor manufacturer to offer a factory-installed roll-over bar.



Pushing power in the winter

Tractors are increasingly being used for winter maintenance operations and are therefore in operation the whole year round. Whether working with a snow plough, cutter or cutter blower, pushing power and operating comfort are what count here. The load relief control ensures driving safety and ride comfort. The large glazed areas in the cab provide optimal all-round visibility to the surroundings and the mounted implement.



FENDT TRACTORS

Why does a Fendt Vario always pay off?

Because it's high season all year around. You can finish all of your work in any season with a Fendt tractor. Whether mowing, cutting hedges, recultivating, mulching, loading, transporting or clearing snow – a Fendt tractor is the all-purpose tool that you can rely on all year round, for many years to come. In municipal operations, in particular, you can utilise the full range of functions of a Fendt tractor over the whole year. Thanks to its high versatility, a Fendt can do the job of many other machines.

From vineyard to cycling path

Anywhere where things get steep or narrow, the small Fendt 200 Vario comes across in a big way. In the Fendt 200 VFP version, the narrow track tractor already starts at an outer width of only 1.07 metres – ideal for the maintenance of grass strips with a boom mower, e.g. on cycling paths or parking areas. The Fendt 200 Vario VFP is also indispensable for winter maintenance on pavements. Despite its compact dimensions, you can enjoy a spacious and clearly designed cab as well as the ease of operation provided by the Fendt Variotronic and Vario transmission.



- Mowing, maintenance and grass regeneration on parking areas and golf courses, athletic fields, large open spaces, ditches and marginal grass strips with aerator, reel, rotary and flail mower



- Hedge maintenance with boom trimmer
- Shredding brush with shredder



- Transport with container flatbed or trailer
- Roadside maintenance work with
 - Ditch cleaner
 - Branch or brush cutter
 - Washing brush
 - Verge cleaning device, etc.
- Sweeping



- Clearing and spreading on parking spaces, walking and biking paths
- Snow blowing with side wall cutter or cutter blower

FENDT 200 VFP VARIO
51 – 81 KW / 70 – 110 HP



FENDT 200 VARIO
51 – 81 KW / 70 – 110 HP





Fendt 300 Vario – the municipal tractor

The 300 series has been bringing together the experience of generations since 1980. Whether for grassland, transport or winter maintenance work – the Fendt 300 Vario is now equipped with even more comfort, features and efficient technology, which makes it your reliable companion for the daily challenges of your work. For example, the Fendt 300er series also has a multifunction joystick and a Vario-terminal for continuous ease of operation. And especially convincing: its attractive price-performance ratio. The new Fendt 300 Vario complies with the new EU Stage 4 / Tier 4 final emissions standards.



- Mowing and maintenance of parks and large spaces using rotary or flail mowers



- Hedge maintenance with boom trimmer
- Forestry mulching
- Shredding brush with shredder



- Transport with container flatbed or trailer
- Roadside maintenance work with
 - Ditch cleaner
 - Branch or brush cutter
 - Washing brush
 - Verge cleaning device, etc.
- Sweeping



- Clearing and spreading on parking spaces, municipal and county roads
 - Side wall cutter
 - Cutter blower





Perfect for year-round operations

The popular tractors in the powerful mid-horsepower class range from 125 hp to 240 hp. From light-duty grounds maintenance to dynamic transport, the Fendt 500 and 700 Vario prove to be very flexible and economical. The Fendt 700 is equipped with a fourth PTO speed, 1000E, so you can save fuel when performing work with a high speed demand, e.g. working with a boom mower. Another special Fendt solution for municipal operations is the Fendt load-bearing frame, which ensures precision and stability, even with large boom widths.



- Mowing and maintenance of parks and large spaces using rotary or flail mowers



- Hedge maintenance with boom trimmer
- Forestry mulching
- Shredding brush with shredder



- Transport with container flatbed or trailer
- Roadside maintenance work with
 - Ditch cleaner
 - Branch or brush cutter
 - Washing brush
 - Verge cleaning device, etc.
- Sweeping



- Clearing and spreading on parking spaces, municipal and county roads
 - Side wall cutter
 - Cutter blower



As you can see here, you have everything in view in the Fendt VisioPlus cab.

FENDT 800 VARIO
162 – 206 KW / 220 – 280 HP



FENDT 900 VARIO
199 – 287 KW / 270 – 390 HP



Power and traction with Fendt high-hp tractors

The Fendt 800 and 900 Vario belong to the highest horsepower class of Fendt tractors. With a maximum output of up to 390 hp and a maximum speed of 60 km/h, you can move high loads and save valuable time. Fendt is the only tractor manufacturer to offer roll-over protection in compliance with DIN EN ISO 3471 ROPS for earth moving machinery for its high-horsepower tractors. It is approved for an overall weight of up to 22 tonnes. Since it is perfectly designed for the tractor, it guarantees the best visibility and safety for operators. The frame folds down to the rear hydraulically to allow transport on low-bed trailers. The new models comply with the Stage 4 /TIER 4 final emissions standards.



– Mowing and maintaining large areas



– Operations with mulchers
– Bio-mass production with wood chipper



– Transport with
· Trailer
· Dump trailer
· Push-off trailer
– Roadside maintenance
– Soil removal with scraper
– Ground stabilising with pulvimixer



– Snow cutter blower with reversing driver station





Fendt 1000 Vario. German Meisterwerk.

The Fendt 1000 Vario occupies a new segment with its power output. Its new type of design as a high-performance standard tractor unites all the advantages for operations in the field and on the road. As an expert in power transmission, it is predestined for enduring performance and meets demanding operations with dynamic torque development at low speeds and low consumption. Its large tyres, intelligent ballasting and tyre pressure assistants as well as unique, variable four-wheel drive deliver the right amount of grip in any situation – along with outstanding manoeuvrability.



– Mowing and maintaining large areas



– Operations with mulchers
– Bio-mass production with wood chipper



– Transport with
· Trailer
· Dump trailer
· Push-off trailer
– Roadside maintenance
– Soil removal with scraper
– Ground stabilising with pulvimixer



– Snow cutter blower with reversing driver station





Load, lift, push, weigh, shake, ...

The Fendt Cargo and Fendt Cargo Profi front loaders are the perfect addition to your tractor for all loading jobs. They are easily operated with the crossgate lever, so you can place your load precisely. Its compact design and the large steering angle permit agile driving when performing loader work. High hydraulic capacities ensure fast lifting movements and precise loader response, even at low engine speeds.

With the Fendt Cargo and Fendt CargoProfi, you always have the load under control.

- Smart functions of the CargoProfi:
 - Perfect visibility and optimally integrated operating interface for all Fendt Vario models.
 - Intelligent front loader setting using the Varioterminal, including a memory function for repeating working procedures and a shake function.
- Life-time design for a long service life
- Sophisticated parallel guidance through Z-bar linkage
- Automatic attachment lock – CARGO Lock
- Multi-coupler for easy mounting and removing of the front loader, parking supports attached compactly to the arm, gas shock absorber and valve assembly lie protected in the cross beam
- Optional damping system for the best ride comfort





THE FENDT DIFFERENCE

Well thought-out to the last detail

Often little things in the daily routine are what make work easier and increase operator and machine performance. Fendt offers you many smart details and automated solutions so you can complete your daily work faster, more efficiently and with greater pleasure.

CAB AND ERGONOMICS

Feel good at work

Time to climb in

The Fendt driver station boasts high manufacturing quality and excellent ergonomics. The controls are logically placed and well thought-out and the Vario is easy to control. Thanks to the air-conditioning or automatic climate control, the temperature in the workplace can be adjusted optimally. The positions of the seat and steering wheel can be individually adjusted. The result: maintains operator performance and concentration.

Suspension comfort for long days

Whether mechanical or pneumatic, the cab suspension systems from Fendt ensure high ride comfort. The seat already has air suspension as standard specification starting with the 300 Vario, so that operators have a comfortable place for their work. You can choose from three seat variants to meet your needs. They can even be equipped with climate control and pneumatic lumbar support.

Glazed areas optimised for perfect visibility

The position of the slim A and B-pillars are designed to maximise the large glass areas for all-round visibility. This approach was perfected in the VisioPlus cab, where the front window curves up into the roof. That triples the viewing angle: with 77 degrees, you have an

unobstructed upward view – even to the completely raised front loader. You have a continuous all-round view in the VisioPlus cab, e.g. to the boom mower, without B-pillars to get in the way.

Safety on the construction site: FOPS certification for Fendt cab

The design of the Fendt cabs is so strong that they meet the requirements of FOPS (Falling Object Protection Structure). That means that the cab, and therefore the operator, is protected against falling objects on the construction site up to an energy input of 1365 Joules. All Fendt tractors with cabs have been tested to DIN EN ISO 3449 and certified for safety in operations on construction sites by the accredited DLG Testing Station in Groß-Umstadt.

Much to discover

The little extras in the Fendt cab are practical for every day work. Various stowage spaces and nets offer space for utensils that are required during the work day. Food and drinks are kept cool and clean in the air-conditioned cooling compartment.

TECHNICAL SPECIFICATIONS ■ = STANDARD | □ = OPTIONAL



■ The 300, 500 and 700 Vario series are equipped with the VisioPlus cab, which has perfected sight lines and, with 6.1 m² of glazing, an exceptional sense of space.



□ The x5 cab on the high-horsepower tractors offers a correspondingly generous amount of space and outstanding visibility through the large glass areas. The seat, steering wheel and armrest can be adjusted individually, so every driver can find an ergonomic position.



■ For the best upward visibility, the 200 Vario has a roof window as standard. The roof window can be opened upwards for additional ventilation in the cab. A retractable sun shade protects against intense sunlight.



■ The standard one-piece front window (with door on left) offers an uninterrupted view over the entire sight angle.



■ In the VisioPlus cab, the upward viewing angle has been tripled to 77°. The downward sight lines have also been optimised and it is easy to see into the wheel arches.



■ Passengers find a safe and comfortable passenger seat in the VisioPlus cab.



□ The optional automatic climate control permits precise temperature control in the cab. Operators can create their own climate for comfort. There is space for a meal and a cool drink in the air-conditioned cooling compartment.



■ Upon request, Fendt offers a front window that opens in combination with doors on the left and right.



■ The terminal device bracket for additional terminals in the VisioPlus cab is ideally positioned in the upper part of the right window. The visibility to the right remains unobstructed.



□ The device bracket is ideally positioned in the upper area of the right window. The visibility to the right remains unobstructed.

OPERATING CONCEPT

When high-tech is simple ...

... it's called Fendt Variotronic.

The Varioterminal is the central control unit for all tractor and implement settings. Furthermore, you can operate and keep track of the Variotronic features directly in the terminal per touchscreen or keys. ISOBUS-capable implements can also be controlled with the Varioterminal. No additional implement terminals are necessary, so you gain more space and have a better overview.

The newest generation Varioterminal

The Varioterminal 10.4-B sets standards for modern touch control. The borderless LCD display with a full glass front is the central control element and a real eye-catcher with its smartphone look. High-quality touch display made of scratch-proof glass has a resolution of 800 x 600 pixels and 16 million colours for crisp images. A smaller Varioterminal 7" and 7-A is also available as a choice.

Logical, intuitive and universal

The central operating unit, positioned on the right-hand side, is ergonomic and found in all Fendt series. There operators find all the operating elements, the speed lever and crossgate lever. The Fendt 500 to 900 Vario series also include the Varioterminal, which is attached to the right armrest.

Flexible, customised control

Fendt tractors, which are equipped with a joystick, permit optimal control with one hand. Operators can freely select the functions they would like to control with the joystick and then assign them to the buttons individually. And of course, the tractor can also be accelerated and decelerated with the joystick.

TECHNICAL SPECIFICATIONS ■ = STANDARD | □ = OPTIONAL



■ The Varioterminal 10.4" fulfils all operator wishes. Now, in addition to the tractor operations and implement control, the external cameras and the VarioDoc documentation system can be controlled with just one terminal.



□ The 200 Vario V/F/P is equipped with the Vario Joystick as standard. It controls the transmission and cruise control, activates the engine speed memory and actuates the 3rd and 4th hydraulic circuits.



■ The 10.4" Varioterminal offers various views. Operators can display up to four applications on the terminal in a customised layout. The camera view is very practical: up to two reversing cameras in the half-screen view or one camera in full-screen view can be displayed. They offer a good overview and therefore greater safety.



■ The 200 Vario V/F/P Profi package includes additional functions, such as operation of control valves and automated functions for the rear linkage and rear PTO, which can be controlled with the multi-function joystick. TMS is integrated as standard and up to six control values are possible.



■ With the reverser lever, changing directions is easily done with the left hand. The Stop & Go function slows the tractor down to a standstill and then accelerates it in the desired direction, targeting the previous gear ratio.



■ Fendt offers an integral digital tachograph for the 500 to 900 Vario series.



□ The height and tilt adjustable steering wheel allows each driver to find the ideal sitting position. Engine speed, multiple and ground speed indicators are displayed in the instrument cluster.



□ You can easily change menu settings in the Varioterminal by either touching the screen or pushing the navigation buttons. You can navigate through the menus using either the keys or the touchscreen. The tractor controls on both terminals are identical. Moreover, the user interface can be switched from day to night mode.



■ With a 7-inch screen diagonal, the 7"Varioterminal is a handy and functional companion for tractor operations and Variotronic implement control.



□ All Fendt tractors have a fuel consumption indicator. These not only monitor the current consumption, but also log the consumption for different operations.

AUTOMATED FUNCTIONS | INTERFACES

Automated efficiency and perfected interfaces

Automatically economical

The Fendt Variotronic provides numerous automated functions, which permit high efficiency during operation. Because precise work, while continually driving at the right speed, really pays off.

Perfect coordination makes the difference

On a Fendt Vario, the engine and transmission are perfectly tuned to each other. Driving strategies and settings can be ideally adjusted to the particular situation. Presetting, for example, of the engine speed and travel speed, makes it much easier to work more economically.

Flexibility for all operations

With their many interfaces and many mounting options at the front and rear, the Fendt tractors offer excellent flexibility for operations over the entire year. Smart technical solutions, such as the load relief front linkage control, make work simpler and easier.

TECHNICAL SPECIFICATIONS ■ = STANDARD | □ = OPTIONAL

■ The driving mode can be individually and freely selected depending on the area of application. Operators can select the pedal mode and control the speed of the tractor with their foot. The alternative is joystick control with up to four different acceleration rates.

■ Two valves can be actuated at once with the crossgate lever, without having to switch hand positions. For example, during front loader work the lift/lower and dump/tilt functions can be controlled with one lever.

■ Concentrate on the essentials during turning manoeuvres. The PTO automatic mode engages and disengages the PTO as soon as the implement has been lowered or raised.

■ The automatic output control permits the tractor to work in the optimal power range with a preset engine load. Operators can therefore concentrate fully on their work.

■ In the Fendt Vario, the engine speed and cruise control speeds can be set individually and independent of each other. This makes work with PTO driven implements much easier, because the engine speed automatically stays at the right level.



□ The Fendt Tractor Management System TMS automatically ensures the engine and transmission are adjusted optimally. The Fendt Vario then automatically drives in the fuel-saving range for maximum efficiency.



■ Located at the rear of the Fendt Vario are various interfaces, for example the hydraulic connections, PTO or hitch system, for mounting different implements. The rear of the tractor is marked by a straightforward design and excellent accessibility.



□ The front linkage on a Fendt is integrated in the overall compact vehicle concept and intelligently accommodated in the front.



□ The comfort front linkage on the 300 to 900 Vario has optional load relief control. This allows the implement to be lowered with the front linkage valve and, at the same time, to be kept floating with a defined pressure. This is especially advantageous for winter operations or with a mulcher, because the weight is shifted to the front axle, which improves steering performance.



□ For the 500 Vario series and higher, Fendt offers a 12 Volt socket, which is located at the rear of the tractor, for guiding ABS trailers.



□ The Fendt Vario have external controls for the linkage and rear PTO. Rear implements are easy to mount. The engine speed can be increased via the rear PTO automatic and the desired PTO speed can be targeted. You save yourself unnecessary steps, for example, when starting the wood chipper.

TRACTOR CONCEPT

Efficient, dynamic,
sophisticated

Perfect driving is stepless.

Because only with the stepless Fendt Vario transmission can you drive at the ideal speed for your work. From 20 metres per hour to a maximum speed of 60 km/h, you can drive precisely without gear steps – using either the multifunction joystick or the foot throttle pedal. The Vario transmission and the engine are also coordinated to minimise fuel consumption as far as possible.

Compact, flexible and comfortable

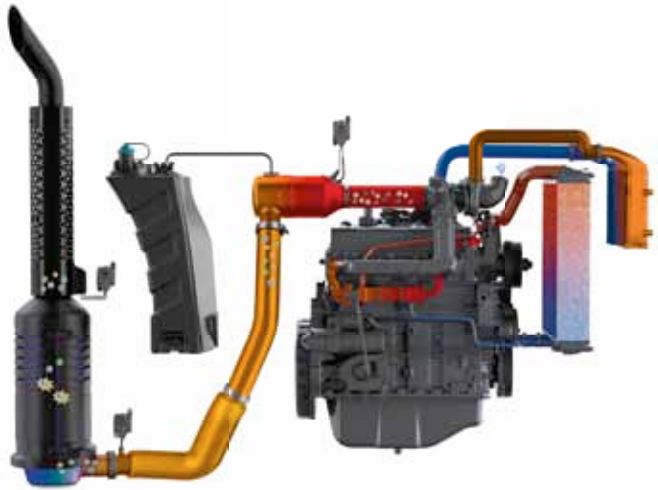
The entire body of the Fendt Vario is designed to be compact and straightforward. This permits exceptional manoeuvrability. The coordinated suspension design concept, from the front axle to the cab suspension to the seat, provides impressive comfort.

Wide visibility field

Always keeping the surroundings and the implements well in view is crucial for all operations. The compactness and narrow bonnet on the Fendt tractors permit excellent visibility, for example, to front-mounted implements. Operators have a good view of the area next to and behind the tractor through the large exterior mirror. The wide-angle mirror provides an even wider field of view. Roller shades protect against glare, the powerful illumination offers perfect brightness for work in the evening or at night.

TECHNICAL SPECIFICATIONS

■ = STANDARD | □ = OPTIONAL



■ Fendt tractors are equipped with the latest engine technology, which is marked by a high injection pressure and an optimised combustion process. The 300 to 900 Vario series are equipped with the highly efficient and environmentally friendly SCR technology and comply with the newest EU Stage 4 / Tier 4 final emissions standards.



■ With the continuously variable Vario transmission, Fendt sets the standard for modern drive technology. The transmission is uniquely efficient and permits speeds starting from 20 Meter per hour up to 60 km/h without shifting.



■ Both the high and low beams provide a one-of-a-kind high level of illumination intensity. The work lights can be individually adjusted for up to 360 degrees of illumination. Xenon or LED lights are available as an option. The corner lights illuminate the wheel arches perfectly.



□ The optional wide-angle mirror expands the field of vision, which greatly enhances safety. You have a better overview of things that are happening on the sides of the tractor. The hazard zone, which is usually located in the blind spot, is much easier to see into.



■ The segment wipers can be set to intervals, like in passenger cars, and clean the front window reliably. The exclusive parallel wiper (500/700 Vario) offers optimum wiping characteristics.



□ The large-capacity fuel tanks on the Fendt Varios are designed for long work days or shifts and are easily accessible from the left-hand side. The AdBlue® tank was optimally integrated in the series with SCR engine technology, so that it can be filled directly next to the diesel tank.



□ The chassis design provides the best ride comfort as well as optimum ergonomics for an exceptional driving sensation:

- the self-levelling front axle suspension
- the anti-roll control
- the Fendt Reaction steering system
- the shock load stabilising
- the cab suspension
- the seat suspension
- the automatic steering axle lock.



■ The Fendt 300 to 900 Vario series can be equipped with electrically adjustable, heated exterior mirrors.



■ An opaque roller shade in the front (Fendt 300 Vario and up) and rear (Fendt 800/900 Vario) is available as glare protection for when the sun is low.



■ The new 300° wiper provides an absolutely unobstructed view. It nearly doubles the wiper field and provides a free view to the wheel arches and the front-mounted implement – and also has integral intermittent control.

TRACTOR CONCEPT

Safe and individual



Safety included

Special operations need special solutions. In terms of safety, the Fendt roll-over bar is the ultimate for heavy construction work. The roll-over bar was developed for the Fendt high-horsepower tractors in collaboration with experts from the construction industry. It protects operators in the cab, even in accidents with the heaviest loads – available exclusively from Fendt.

Maximum driving safety in all situations

The chassis guarantees optimum operability on the road and in unpaved terrain. When driving Fendt high-horsepower tractors with the unique Fendt Stability Control (FSC), you always have a safe feeling, even when negotiating curves. At the same time, the practically maintenance-free braking system, comprising wet multi-disc brakes for the front and rear wheels, provides high driving safety and excellent deceleration.

Meet the demands

A Fendt can be custom-equipped for particular requirements. For example, Fendt offers a comprehensive ballasting concept where high pulling power is required. A selection of different hitch systems are available, so a matching solution for the existing fleet can be found.

Reverse is as easy as forward

The integral reversing driver station has proven to be especially flexible, especially in forestry operations or in winter service with a snow cutter blower. The driver stand can be turned quickly and easily and the operating elements swing along with it.

TECHNICAL SPECIFICATIONS ■ = STANDARD | □ = OPTIONAL

■ You are well-equipped for emergencies with a Fendt. The 300 to 900 Vario series have a first-aid kit, warning vest and warning triangle. A fire extinguisher is attached to the fuel tank.



■ The ignition keys for the Fendt high-horsepower tractors (700/800/900 Vario) are coded for the particular vehicle, so that it can be safely parked, on the construction site for example.



□ Whether in forward or reverse position – full comfort in each direction: It only takes a few steps to turn the driver seat, including the steering wheel, multi-function armrest and all the control elements, around 180 degrees.



■ The roll-over protection is tested according to the standard DIN EN ISO 3471 ROPS for Earth-Moving Machinery. It is approved for a vehicle weight of up to 22 tonnes.



■ The Fendt standard tractors can be equipped with swivelling front wheel mudguards upon request. These permit a maximum wheel angle and maximum manoeuvrability.



■ In so far as a Fendt high-horsepower tractor is not equipped with front hydraulics, front weights can be picked up with the cost-efficient comfort ballast pickup.



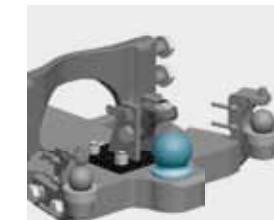
■ Practical warning signs for vehicles up to three metres wide are attached to the cab in the 300 to 900 Vario series and are very easy to fold out.



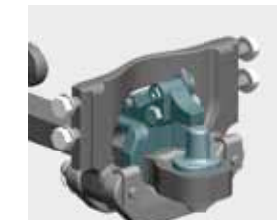
■ A good grip in all situations requires the right ballast. Fendt offers a selection of front weights with 400, 870, 1250, 1800 or 2500 kg.



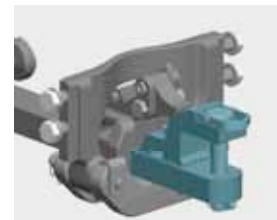
■ The power, and therefore the grip, is also delivered to the ground through the rear wheels. Additional weights, 300 kg or 1,000 kg each, are available as ballast for the rear wheels on Fendt high-horsepower tractors.



□ Fendt offers factory-installed connecting points for forced steering compliant with ISO/DIS 26402. These can be mounted on both sides and are fitted with standardised ball heads. An extended ball-type coupling, which offers an improved steering lock and therefore greater safety in tight curves, is available upon request.



■ The Piton fix (heavy duty) is designed for a vertical hitch load of up to four tonnes in Germany (EU three tonnes).



□ The pull-out position of the swinging drawbar can be varied according to need.

Package modules in the Power, Profi and ProfiPlus variants.
All model packages can be customised in the factory with up to 260 options.



FENDT 200 V/F/P VARIO



FENDT 200 VARIO



FENDT 300 VARIO



FENDT 500 VARIO



FENDT 700 VARIO



FENDT 800 VARIO



FENDT 900 VARIO



FENDT 1000 VARIO

Engine	Fendt	207 V/F	208 V/F	209 V/F/P	210 V/F/P	211 V/F/P	207	208	209	210	211	310	311	312	313	512	513	514	516	714	716	718	720	722	724	822	824	826	828	927	930	933	936	939	1038	1042	1046	1050	Fendt	Engine		
	Rated power (kW/hp) ECE R24											69 / 93	78 / 107	85 / 116	92 / 126	81/110	88/120	99/135	110/150	94 / 128	108 / 148	121 / 165	136 / 185	151 / 205	162 / 220	162 / 220	176 / 240	191 / 260	206 / 280	199 / 270	221 / 300	243 / 330	265 / 360	287 / 390					Rated power (kW/hp) ECE R24			
	Max. power (kW/hp) ECE R24	51/70	59/80	67/90	73/100	81/110	51/70	59/80	67/90	73/100	81/110	81 / 110	88 / 119	95 / 129	102 / 138	92/125	99/135	107/145	121/165	107 / 145	121 / 165	132 / 180	147 / 200	162 / 220	176 / 240	162 / 220	176 / 240	191 / 260	206 / 280	199 / 270	221 / 300	243 / 330	265 / 360	287 / 390					Max. power (kW/hp) ECE R24			
	Rated power (kW/hp) EC 97/68	28/38	30/41	32/44	34/46	36/49	28/38	30/41	32/44	34/46	36/49	74 / 100	83 / 113	90 / 123	97 / 133	91/124	99/134	109/148	120/163	106 / 144	120 / 163	133 / 181	148 / 201	163 / 222	174 / 237	166 / 226	182 / 248	195 / 265	211 / 287	202 / 275	224 / 305	245 / 333	269 / 366	291 / 396					Rated power (kW/hp) EC 97/68			
	Maximum power (kW/hp) EC 97/68	55/75	63/85	70/95	77/105	85/115	55/75	63/85	70/95	77/105	85/115	83 / 113	91 / 123	98 / 133	105 / 142	96/131	103/140	113/154	124/169	110 / 150	125 / 170	139 / 188	153 / 208	168 / 229	181 / 246	166 / 226	182 / 248	195 / 265	211 / 287									Maximum power (kW/hp) EC 97/68				
	Constant power (kW/hp) EC 97/68 1,500 – 1,700 rpm																																						Constant power (kW/hp) EC 97/68 1,500 – 1,700 rpm			
	No. of cylinders / cooling	3/water	3/water	3/water	3/water	3/water	3/water	3/water	3/water	3/water	3/water	3/water	4/water	4/water	4/water	4/water	4/water	4/water	4/water	4/water	6/water	6/water	6/water	6/water	6/water	6/water	6/water	6/water	6/water	6/water	6/water	6/water	6/water	6/water	6/water	6/water	6/water	6/water	No. of cylinders / cooling			
Max. torque (Nm) (rpm)	295 1600	337 1600	373 1600	408 1600	458 1600	295 1600	337 1600	373 1600	408 1600	458 1600	295 1600	337 1600	373 1600	408 1600	458 1600	550 1450	590 1450	649 1450	687 1450	650 1450	725 1450	804 1450	897 1450	988 1450	1058 1450	960 1450	1054 1450	1125 1450	1217 1450	1128 1450	1248 1450	1350 1450	1488 1450	1538 1450	1,900 1,000 – 1,500	2,100 1,000 – 1,500	2,300 1,000 – 1,500	2,400 1,000 – 1,500	Max. torque (Nm) (rpm)			
Fuel tank capacity (l)	76	76	76	76	76	125	125	125	125	125	210	210	210	210	298	298	298	298	400	400	400	400	400	400	505	505	505	505	600	600	600	600	600	800	800	800	800	Fuel tank capacity (l)				
AdBlue® (l)	–	–	–	–	–	–	–	–	–	–	23	23	23	23	31	31	31	31	38	38	38	38	38	38	50	50	50	50	36	36	36	36	36	85	85	85	85	AdBlue® (l)				
Transmission / PTO	Type	stepless Vario Transmission ML 70					stepless Vario Transmission ML 70					stepless Vario Trans-		mission ML 75		stepless Vario Transmission ML 90				stepless Vario transmission ML 140		stepless Vario transmission ML 180				stepless Vario transmission ML 220				ML 260					stepless Vario Transmission; VarioDrive TA 400				Type			
	Max. speed (km/h)	40	40	40	40	40	40	40	40	40	40	40	40	40	40	50	50	50	50	50	50	50	50	50	50	60	60	60	60	60	60	60	60	60	60	60	Max. speed (km/h)					
	Rear PTO (rpm)	540 / 540E / 1000					540 / 540E / 1000 – 540 / ground / 1000					540 / 540E / 1000 or rev/driven metre 540/65R34)		540 / 1000/ ground PTO (4.5 1000		540/540E/1000				540/540E/1000/1000E				540E / 1000 or 1000 / 1000E				540E / 1000 or 1000 / 1000E					1000/1000E/1300				Rear PTO (rpm)					
	Front PTO (rpm)	540 or 1000 optional					540 or 1000 optional					540 or 1000 optional		540 or 1000 optional		540 or 1000				1000				1000				1000					Front PTO (rpm)									
Linkage / hydraulics	Max. lift capacity, rear linkage (daN)	2775/ 2417/ –	2775/ 2417/ –	2775/ 2417/ 3134	2775/ 2417/ 3134	2775/ 2417/ 3134	4204	4204	4204	4204	4204	5960	5960	5960	5960	7780	7780	7780	7780	10360	10360	10360	10360	10360	10360	11 110	11 110	11 110	11 110	11800	11800	11800	11800	11800	12,920	12,920	12,920	12,920	Max. lift capacity, rear linkage (daN)			
	Max. lift capacity, front linkage (daN)	2380/ 2380/ –	2380/ 2380/ –	2380/ 2380/ 2540	2380/ 2380/ 2540	2380/ 2380/ 2540	2490	2490	2490	2490	2490	3130	3130	3130	3130	3420	3420	3420	3420	4418	4418	4418	4418	4418	4418	5040	5040	5040	5040	5580	5580	5580	5580	5580	5,584	5,584	5,584	5,584	Max. lift capacity, front linkage (daN)			
Weights / dimensions	Unladen weight (kg)	2780/ 2860/ –	2780/ 2860/ –	2780/ 2860/ 3080	2780/ 2860/ 3080	2780/ 2860/ 3080	3750	3790	3870	3870	3930	4810	4810	4970	4970	6050	6050	6400	6400	7735	7735	7980	7980	7980	7980	6050	6050	6400	6400	10830	10830	10830	10900	10900	14,000	14,000	14,000	14,000	Unladen weight (kg)			
	Perm. overall weight (kg)	4500/ 4500/ –	4500/ 4500/ –	4500/ 4500/ 5300	4500/ 4500/ 5300	4500/ 4500/ 5300	7000	7000	7000	7000	7000	8500	8500	8500	8500	10500	10500	10500	10500	12500	12500	14000	14000	14000	14000	1400 – 1600	1400 – 1600	1400 – 1600	1400 – 1600	15000 – 18000	15000 – 18000	15000 – 18000	15000 – 18000	15000 – 18000	18000 21000 (country-specific)	18000 21000 (country-specific)	18000 21000 (country-specific)	18000 21000 (country-specific)	Perm. overall weight (kg)			
Electrical equipment	POWER equipment level											Power equipment level: Vario (2-gate) with engine speed and as well as automated functions		center with Power joystick cruise control memory keys for the rear linkage and PTO		Power equipment level: Multi-function joystick with cruise control, engine speed memory, automated functions, hydraulic controls, Variotermlinal 7" with touch and key operation				Power equipment level: Multi-function joystick with cruise control, engine speed memory, automated functions, Variotermlinal 7" with touch and key operation, valves max. 4 da electr. valves				Power equipment level: Joystick with cruise control and engine speed memory, Variotermlinal 7" with touch and key operation, aux. valves max. 4 da electr. valves				Power equipment level: Joystick with cruise control and engine speed memory, Variotermlinal 7" with touch and key operation, aux. valves max. 4 da electr. valves					Power equipment level									
	PowerPlus equipment level																																					PowerPlus equipment level				
	PROFI equipment level											Profi equipment level: Multi-control, engine speed memory, hydraulic controls, Variotermlinal 7-A with key operation		function joystick with cruise automated functions, nal 7-A with key operation		Profi equipment level: Multi-function joystick with cruise control, engine speed memory, automated functions, hydraulic controls, Variotermlinal 7" with touch and key operation				Profi equipment level: Multi-function joystick with cruise control, engine speed memory, automated functions, Variotermlinal 7" with touch and key operation, aux. valves max. 7 da electr. valves				Profi equipment level: Multi-function joystick with cruise control, engine speed memory, automated functions, Variotermlinal 7" with touch and key operation, aux. valves max. 8 da electr. valves / crossgate lever				Profi equipment level: Multi-function joystick with cruise control, engine speed memory, automated functions, Variotermlinal 7" with touch and key operation, aux. valves max. 8 da electr. valves / crossgate lever					Profi equipment level									
	PROFI PLUS equipment level																																					ProfiPlus equipment level				
	Product features Fendt Variotronic	Product features Fendt Variotronic: Vario Joystick with engine speed memory and cruise control, multi-function joystick with keys for rear linkage, control valves, cruise control and engine speed memory key, hydraulic controls, Vario TMS, automated linkage and PTO functions					Product features Fendt Variotronic: Variostick control, engine speed memory, cruise control, hydraulic controls, Vario TMS, valve control, enhanced controls for 4WD, differential locks and PTOs					Profi equipment level: Multi-control, engine speed memory, hydraulic controls, Variotermlinal 7-A with key operation		function joystick with cruise automated functions, nal 7-A with key operation		Profi equipment level: Multi-function joystick, 10.4" Variotermlinal with touch and key operation, 2 camera ports, incl. VarioDoc				ProfiPlus equipment level: Multi-function joystick with cruise control, engine speed memory, automated functions, guidance ready kit, Variotermlinal 10.4" with touch and key operation, 2 camera ports, incl. VarioDoc aux. valves max. 8 da electr. valves / crossgate lever				ProfiPlus equipment level: Multi-function joystick with cruise control, engine speed memory, automated functions, guidance ready kit, Variotermlinal 10.4" with touch and key operation, 2 camera ports, incl. VarioDoc aux. valves max. 8 da electr. valves / crossgate lever					Product features Fendt Variotronic: Hydraulic operation, ISOBUS implement control, SectionControl, Variotronic®, Vario TMS, VarioDoc, VarioDoc Pro, VarioGuide, VarioActive steering, cruise control and engine speed memory, camera function, VarioGrip tyre pressure regulation system controls					Product features Fendt Variotronic								
	Product features Fendt Variotronic	Product features Fendt Variotronic: Vario Joystick with engine speed memory and cruise control, multi-function joystick with keys for rear linkage, control valves, cruise control and engine speed memory key, hydraulic controls, Vario TMS, automated linkage and PTO functions					Product features Fendt Variotronic: Variostick control, engine speed memory, cruise control, hydraulic controls, Vario TMS, valve control, enhanced controls for 4WD, differential locks and PTOs					Profi equipment level: Multi-control, engine speed memory, hydraulic controls, Variotermlinal 7-A with key operation		function joystick with cruise automated functions, nal 7-A with key operation		Profi equipment level: Multi-function joystick, 10.4" Variotermlinal with touch and key operation, 2 camera ports, incl. VarioDoc				ProfiPlus equipment level: Multi-function joystick with cruise control, engine speed memory, automated functions, guidance ready kit, Variotermlinal 10.4" with touch and key operation, 2 camera ports, incl. VarioDoc aux. valves max. 8 da electr. valves / crossgate lever				ProfiPlus equipment level: Multi-function joystick with cruise control, engine speed memory, automated functions, guidance ready kit, Variotermlinal 10.4" with touch and key operation, 2 camera ports, incl. VarioDoc aux. valves max. 8 da electr. valves / crossgate lever					Product features Fendt Variotronic: Hydraulic operation, ISOBUS implement control, SectionControl, Variotronic®, Vario TMS, VarioDoc, VarioDoc Pro, VarioGuide, VarioActive steering, cruise control and engine speed memory, camera function, VarioGrip tyre pressure regulation system controls					Product features Fendt Variotronic								
Front loader	Fendt Cargo / Fendt Cargo Profi	—					3X / 65					3X / 70 4X / 75 4X / 75		compact 4X / 75 profi		4X/75 4X/80 4X/80 Profi				4X/85 5X85 5X/85 Profi 5X/90 5X/90 Profi				—				—					—				Fendt Cargo / Fendt Cargo Profi					
Equipment features	Further product options (selection), some are part of equipment packages	Air-conditioning, front axle suspension and much more					Air-conditioning, front axle suspension, cab suspension and much more					Product features Fendt Vario Front loader operation with shake function (Fendt Cargo control, headland management		tronic (Fendt 300 Vario Profi): weighing, memory and Profi), ISOBUS implement		Cross-over work lights, LED work lights, automatically controlled interior lighting, coming home light, cooling compartment, sockets in the cab, wide-angle mirror, air-conditioning, VarioActive, load relief front linkage control, DCUP/CUP couplings, integrated cable lead-through, etc.				Cross-over work lights, LED work lights, auto. controlled interior lighting, coming home light, 300" wiper, cooling compartment, wide-angle mirror, air-conditioning, sockets in the cab, 300" wiper, wide-angle mirror, load relief front linkage control, power beyond, DCUP couplings, integrated cable lead-through, row crop (track width at least 60"), and much more.				VarioGrip (tyre pressure regulation system), cross-over work lights, LED work lights, auto. controlled interior lighting , coming home light, cooling compartment, sockets in the cab, 300" wiper, wide-angle mirror, load relief front linkage control, power beyond, reverse drive mode, air-conditioning, VarioActive, DCUP couplings, and much more.				VarioGrip (tyre pressure regulation system), cross-over work lights, LED work lights, auto. controlled interior lighting , coming home light, cooling compartment, sockets in the cab, 300" wiper, wide-angle mirror, load relief front linkage control, power beyond, reverse drive mode, air-conditioning, VarioActive, DCUP couplings, and much more.					Handbrake electro-pneumatic, VarioGrip (tyre pressure regulation system), cross-over work lights, LED work lights, bonnet work lights, daytime running lamps, autom. controlled interior lighting, coming home light, 3rd brake light, cooling compartment, sockets in the cab, 300" wiper, side window wiper, roller shade right, bonnet camera, wide-angle mirror incl. position light, power beyond, reverse drive mode, air-conditioning, VarioActive, exchangeable hydraulic system with 1/2", 3/4" & 5/8" FFC DCUP couplings, 170 l valves, 2 hydraulic pumps 220+210 l/min, rear linkage/rear PTO optional, and much more.					Further product options (selection), some are part of equipment packages				



FRONT LOADER

Front loader model	3X/65	3X/65	3X/70 ²⁾	4X/75	4X/80	4X/85 ³⁾	5X/85	5X/90
Lift capacity over full hght daN	1680	2000	1940	1940	2260	2600	2600	2950
Max. lift capacity daN	1850	2190	2250	2250	2620	3000	3000	3460
Lifting height mm ¹⁾	3740	3740	4155	4155	4155	4150	4460	4460
Digging depth mm ¹⁾	210	160	150	150	150	130	250	250
Dumping dist. (max. height) ¹⁾	860	1030	1145	1145	1210	980	1080	1080
Dumping dist. (at 3.5 m) ¹⁾	1170	1450	1685	1685	1750	1610	1910	1910

Tractor model								
Fendt 200 Vario	■							
Fendt 300 Vario		■	■	■				
Fendt 500 Vario			■		■			
Fendt 700 Vario						■	■	■

1) also available as CargoProfi
2) depends on tyres

Equipment

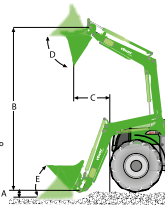
Front loader	3X/65	3X/70 ²⁾	4X/75	4X/80	4X/85 ³⁾	5X/85	5X/90
Lift cylinder da	■	■	■	■	■	■	■
Quick-attach frame	■	■	■	■	■	■	■
Manual attachment lock	■	■	■	■	■	■	■
Const. velocity tip cylinder			■	■	■	■	■
Mechanical parallel guidance	■	■	■	■	■	■	■
Front guard	■	■	■	■	■	■	■
Level indicator	■	■	■	■	■	■	■
Damping-system da	□	□	□	□	□	□	□
Pipe rupture-protection ¹⁾	■	■	■	■	■	■	■
Lowering throttle valve	■	■	■	■	■	■	■
Load holding valve	■	■	■	■	■	■	■
Multi-coupler front loader	■	■	■	■	■	■	■
Hydraulic attachment lock			□	□	□	□	□
3rd + 4th hydraulic working circuit	□	□	□	□	□	□	□
Multi-coupler for 3rd + 4th circuit	□	□	□	□	□	□	□

Tractor equipment

Crossgate lever	■	■	■	■	■	■	■
Fully opening front window		■	■	■	■	■	■
3rd + 4th circuit	□	□	□	□	□	□	□
Multi-coupler attachment	□	□	□	□	□	□	□

1) not applicable with damping

- A Digging depth (mm)
B Lifting height (mm)
C Dumping dist. (mm)
D Emptying angle 55°
E Backward tilt angle 48°



TECHNICAL SPECIFICATIONS ■ = STANDARD | □ = OPTIONAL

FAQ. ALL ABOUT FENDT.

What you have always wanted to know about us.

What makes Fendt Service different?

For us, service means knowing and understanding your work in order to meet your demands for reliability and safety and to act in your economic interest. We stand behind our products and have developed them for the highest demands and long-term operation. Our service is the partnership aspect for your work.

What is the Fendt one-terminal concept?

On the one hand, only one terminal means: the vehicle controls, ISOBUS implement control, VarioGuide automated steering, VarioDoc documentation, camera functions or various assist functions are all conveniently controlled through one terminal, the Fendt Varioterminal. Only one terminal also means that at Fendt, the operating interface is the same across the entire range and is logical. No matter if you are driving a Fendt Vario, a Fendt combine or a Fendt Katana, you will find your way around immediately and feel at home in all the Fendt machines.

Can I update Variotronic?

Fendt Variotronic can be updated. In this way you always have the latest version on your Fendt and the future in your terminal. Please contact your dealer for further information.

What is Fendt Expert?

Become a Vario pro with Fendt Expert driver training: Are you already familiar with all the functions that the technology has to offer? Take advantage of the technology that is found in every Fendt Vario and learn how to optimise the use of all the features with Fendt Expert. Our team of professional instructors offers you competent instruction to enable you to exploit the full performance potential of your Fendt tractor. Inform yourself through your dealer and sign up.

What is Fuse™?

Fuse™ Technologies provides ultra-modern precision farming solutions across all AGCO brands. It permits farmers and contractors to integrate and connect their entire fleet seamlessly, resulting in reduced operating costs and even more efficient and profitable machine operations.

www.agcotechnologies.com

Contact options

fendt.com

Here you will find everything online, from brochures to technical specifications, reports about customers or the company, up to the Fendt event calendar.

Fendt Configurator

With the Fendt Vehicle Configurator, you can choose from all the available equipment variations and put together the optimally equipped vehicle for your farm. The Fendt Configurator is available online at www.fendt.com, where you will find a quick link to it directly on the start page.

fendt.tv

Fendt around the clock – Our Fendt Media Library makes it possible. Our internet TV provides you with news and information about Fendt 24/7.

Test Drives

At fendt.com, you will find the area Service and Sales under Fendt World. Select the tractor demonstration service, then you can already register for a test drive with a tractor.

www.fendt.com

AGCO GmbH – Fendt-Marketing
87616 Marktobderdorf, Germany



Leaders drive Fendt



Fendt is a worldwide brand of AGCO.
All data regarding delivery, appearance, performance, dimensions and weight, fuel consumption and running costs of the vehicles correspond with the latest information available at the time of going to press. Changes may be made before the time of purchase. Your Fendt dealer will be pleased to supply you with up-to-date information. The vehicles are not shown with country-specific equipment.