



**MASSEY FERGUSON**

# MF900

Hard working, high performance loaders







**06**  
Design is  
our strength

**12**  
Easy mounting  
and removing



**14**  
The ultimate  
in control  
and comfort



**20**  
MF900 X  
Utility loaders  
for everyday  
operations



**22**  
Modern,  
simple,  
functional



**25**  
MF900  
Series Loader  
implements:  
The right tools  
for the job



## Contents

- 04** When time's not on your side – we are
- 06** Design is our strength
- 08** MF Professional Series – designed and built for the most demanding tasks
- 10** Built strong for reliability around the farm
- 12** Easy mounting and removing
- 14** The ultimate in control and comfort
- 16** Options that fit your requirements perfectly
- 18** Letting you get on with things
- 20** MF900 X Utility Loaders for everyday operations
- 22** Modern, simple, functional
- 23** Quick and simple to connect and disconnect
- 24** Delivering more with MF900 X Utility Loaders
- 25** MF900 Series Loader implements: the right tools for the job - Bale handling, Buckets and Other implements
- 28** Specifications



# When time's not on your side – we are

If you need a robust, reliable loader to complement your Massey Ferguson tractor you don't need to look far. MF tractors with MF loaders are the ultimate combination of rugged ability, hard work and reliability.

## Getting the job done, simply and efficiently – no compromise

Massey Ferguson 900 Series loaders have been designed and built to industry-leading standards to maximise performance, reliability and ease of operation, without compromising tractor operation or serviceability.

Operation is easy so you can get to work straight away.

## Get the right loader for your Massey Ferguson tractor

Full integration of tractor and loader is achieved easily with the MF900 Series, to suit 38 – 370 hp Massey Ferguson tractors. You can choose from either non self levelling (New Zealand only) or self levelling linkage, available throughout an extensive range of 27 models, along with numerous options and accessories to enhance performance and productivity.

Highly developed, high performance design ensures that these loaders deliver first class versatility, outstanding reliability, and impressive results year after year.

Whatever your handling requirements, the MF loader range can deal with them. From day-to-day jobs to the toughest contractor work, the MF900 Series loaders can be found working away in a wide range of applications – on many livestock and mixed farms, vegetable enterprises, landscape/forestry activities and intensive municipal operation.

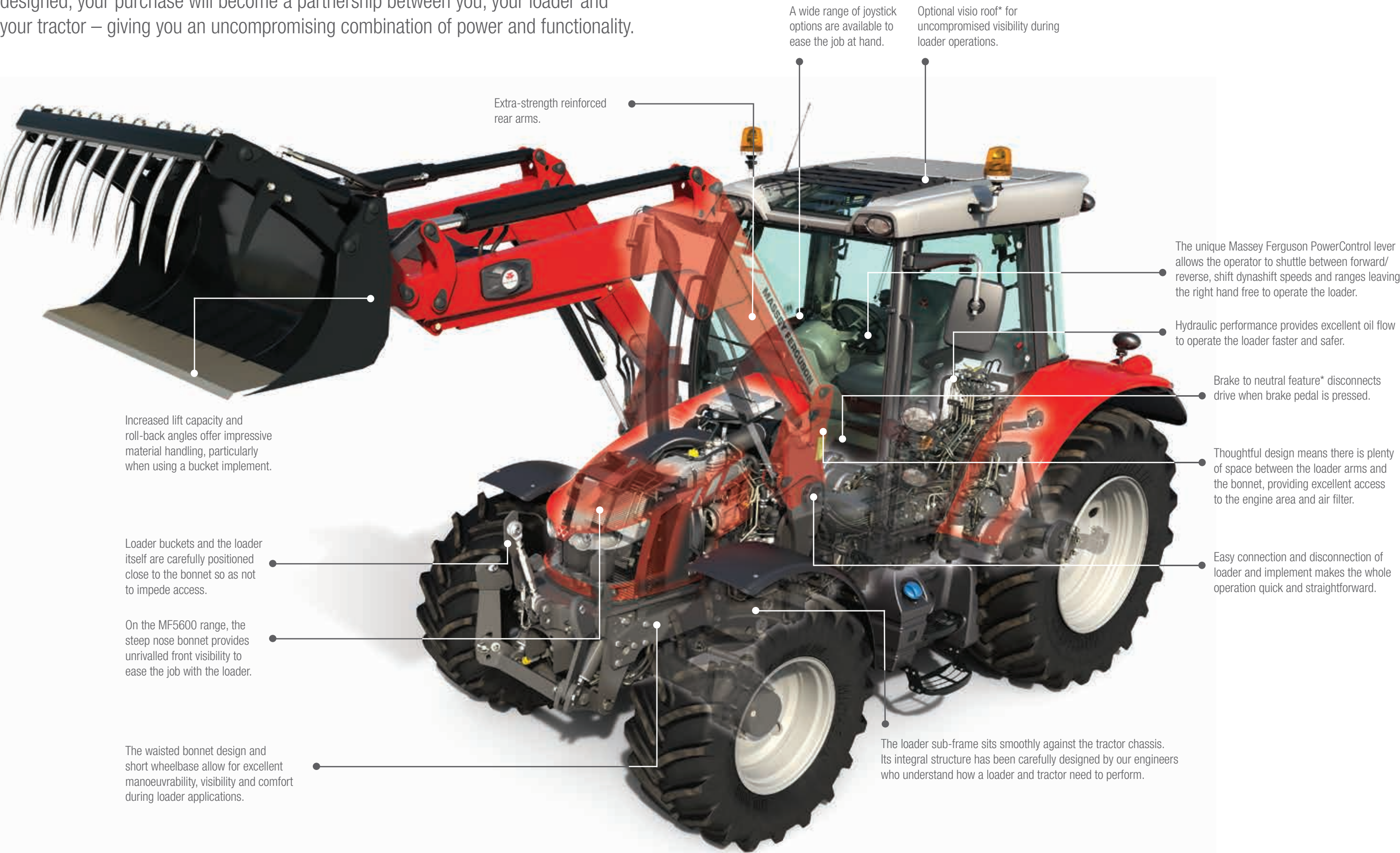


Overseas model shown. Some features may not be available.



# Design is our strength

The Massey Ferguson loader subframe design is the ultimate in integration between two undeniably impressive pieces of machinery. Thanks to the way our tractors are designed, your purchase will become a partnership between you, your loader and your tractor – giving you an uncompromising combination of power and functionality.



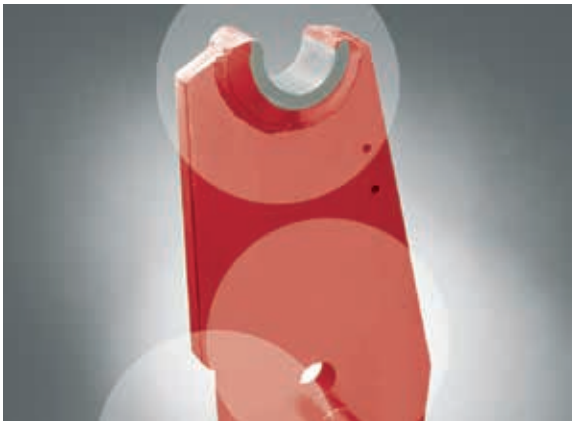
\*Depending on ranges and models. Check availability with your local Massey Ferguson dealer.



# MF Professional Series – designed and built for the most demanding tasks

From the strength and security of the subframe to the slim yet robust design of the welded box section beams, MF900 Professional Series loaders deliver industry-leading features that ensure maximum output and dependability from your Massey Ferguson tractor.

	Models	Type	Lift Height (m)	Capacity (kg)
MF5608 – 10	MF941	Non self levelling	3.45	2,810
	MF951	Non self levelling	3.70	2,920
	MF949	Self levelling	3.60	2,220
	MF956	Self levelling	3.70	2,520
MF5611 – 12	MF941	Non self levelling	3.45	2,810
	MF951	Non self levelling	3.70	2,920
	MF949	Self levelling	3.60	2,220
	MF956	Self levelling	3.70	2,520
MF6600	MF951	Non self levelling	3.70	2,920
	MF961	Non self levelling	3.95	3,220
	MF956	Self levelling	3.70	2,520
	MF966	Self levelling	3.95	2,790
MF7614 MF7714 - 18	MF961	Non self levelling	3.95	3,220
	MF966	Self levelling	3.95	2,790
	MF976	Self levelling	4.20	2,990
MF7720 – 26	MF976	Self levelling	4.20	2,990
	MF988	Self levelling	4.65	3,930
MF8600	MF988	Self levelling	4.65	3,930
MF8700	MF988	Self levelling	4.65	3,930



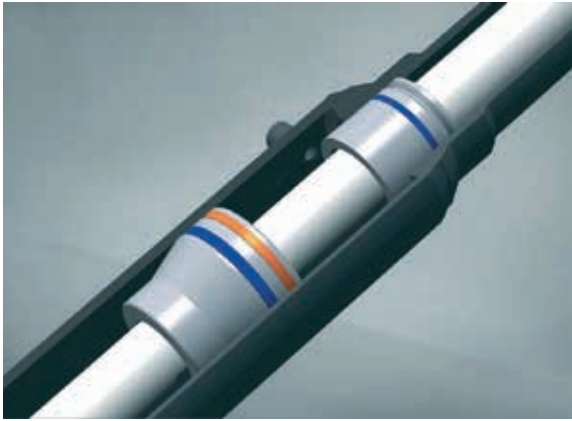
Straightforward subframe design.



Cross-tube houses hydraulic components and provides strength.



Strong double U-section loader beams.



Double acting and pressure-tested hydraulic.



Robotised welding ensures accuracy and strength.



Modern paint processes ensure long life and durability for your loader's paintwork.



# Built strong for reliability around the farm

Designed specifically for your Massey Ferguson tractor, the MF900 Professional Series loaders offer many outstanding features to increase your efficiency.

## Strengthened subframes

Subframes are available to fit most tractors in the Massey Ferguson range and now have larger load-bearing surfaces to strengthen their already robust construction and meet the demands of today's high performance tractors. The subframe extends forwards to a protective grille guard, and in most cases an extension to the tractor's rear axle adds strength and rigidity.

Subframes are designed to allow drive-in attachment, whilst the semi-automatic 'Lock & Go' system retains the loader rigidly and securely in position.

## Protected and concealed hydraulic hoses

Loader beam design combines strength and excellent forward visibility, with the highest quality 'twin C-section' steel construction neatly concealing and protecting all hydraulic hoses. The strong transverse cross-tube, which also houses and protects hydraulic components, adds strength and aids visibility through its positioning near the front of the loader.

All pivot points have greasable, replaceable bushes, giving long intervals between lubrication and enabling quick, inexpensive replacement. All pins are also galvanised and, where stresses demand, are of a larger diameter (40 mm).

Robotised welding ensures consistency in construction throughout, whilst steel undergoes full preparation and priming before a tough and durable powder paint finish is applied.

## MF900 Loaders – Highlights

- ▶ Designed to fit all Massey Ferguson tractors
- ▶ Clean beam design offers unrivalled visibility and safety
- ▶ Enclosed pipework reduces the risk of damage
- ▶ 'Lock & Go', semi-automatic connection and removal system simplifies mounting
- ▶ Fast coupling of all hoses
- ▶ SoftDrive absorbs shocks and protects operators and the machine from shock loads
- ▶ Fully integrated operation through a range of Massey Ferguson tractor joysticks
- ▶ Simple fitting for a wide range of implements





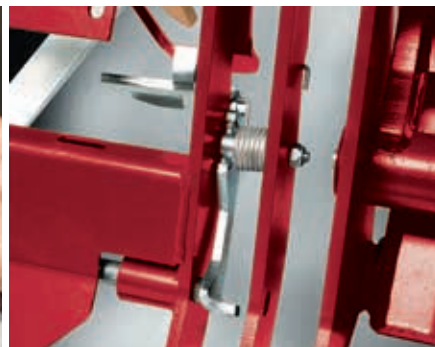
# Easy mounting and removing

Through the application of advanced industry-leading technology, MF900 Professional Series loaders provide simple practical solutions to the day-to-day challenges of modern farming, ensuring quick and easy operation from the start.



## Standard 'Lock & Go' connection system

For ease of connection and disconnection, all loaders are designed with the standard 'Lock & Go' system. Requiring no tools and incorporating rigid support legs, the 'Lock & Go' system is simply designed to save time, enabling straightforward attachment/detachment.



## 'Clic-on' with integrated safety function

In addition to the excellent visibility of the tool carrier, secure implement attachment is further aided by the 'Clic-on' feature. When an implement is detached, the 'Clic-on' device holds the locking pins in their retracted position. Attaching an implement and rolling back the tool carrier allows the locking pins to return to their locked position automatically. 'Clic-on' is fitted as standard, making implement attachment a whole lot easier and more secure.

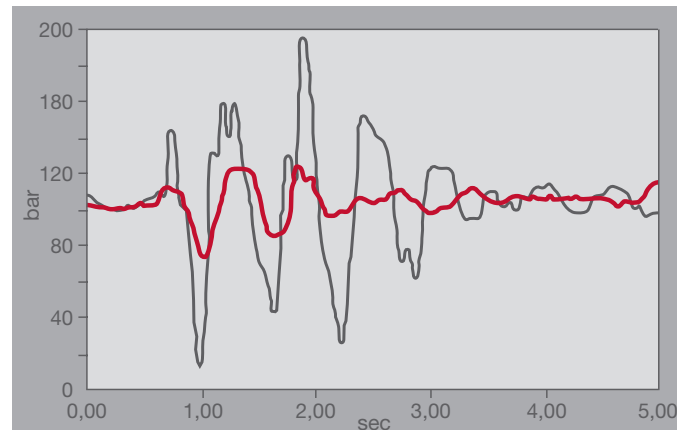


## Faster connections

Fast hydraulic coupling of tractor and loader is made easy with the MC4 quick coupler – standard on all MF900 Professional Series loaders.

## 'Selecto-fix'

Many attachments in the range are equipped with 'Selecto-fix'. This provides a rapid, easy and positive hydraulic connection, with no risk of spillage or leakage.



Pressure in the lift rams with 'SoftDrive'

Pressure in the lift rams without 'SoftDrive'

## Innovative 'SoftDrive' system

Stresses on loader and tractor, as well as the operator, can be reduced by the optional addition of the innovative 'SoftDrive' shock absorption system. Available on all models, hidden and protected inside the cross tube, 'SoftDrive' can be activated when you need it – particularly useful on rough terrain or in transport applications – or switched off for precise pallet stacking or bale handling.

# Five steps to a quality working day



## Step 1.

Simply drive the tractor into the parked loader. The loader will smoothly meet with the attachment hooks.



## Step 2.

The standard MC4 quick coupler makes hydraulic and electrical connections to the tractor fast and simple.



## Step 3.

By operating the lift cylinder, the semi automatic Lock and Go system speeds and simplifies loader hook up.



## Step 4.

Fold up the park stand.



## Step 5.

Get to work!



# The ultimate in control and comfort

MF900 Professional Series loaders set the standard in control and ergonomics, ensuring simple and effective operation, leading to higher levels of comfort, safety and output. You'll never have a more efficient tractor/loader combination.

MF900 Professional Series loaders offer a range of ergonomically designed and intuitive loader control systems designed by Massey Ferguson engineers specifically for the MF tractor range.

### Optimum feel and control

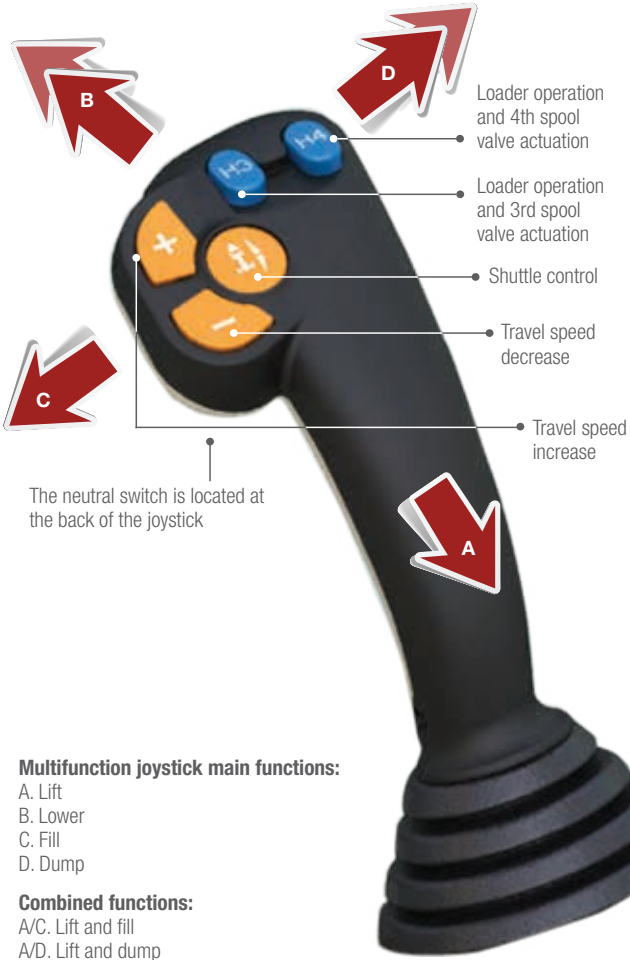
One of the additional benefits of a Massey Ferguson tractor/loader combination is the PowerControl lever. It enables rapid changes of direction without use of the clutch by using the left hand. This means that the right hand is free to maintain full control of the loader.

Other available options include the ability to operate the loader via tractor spool valves using either mechanical or electronic multifunction joysticks. Your choice of controls, coupled with the overall tractor and loader design, choice of visio roof\* and bonnet style will prove to be an indispensable part of your business. Giving you complete and consistent functionality and ease-of-use throughout your working day.



Model shown here: MF5600 Series – 'Efficient' version with electrohydraulic multifunction joystick.

\*On selected models.



### Multifunction joystick main functions:

- A. Lift
- B. Lower
- C. Fill
- D. Dump

### Combined functions:

- A/C. Lift and fill
- A/D. Lift and dump
- B/C. Lower and fill
- B/D. Lower and dump – bucket adjustment to horizontal position

The beauty of this joystick means you can go from forward to reverse and operate the loader at the same time, without taking your hand off the steering wheel.



**Essential cab option**  
with mechanical multifunction joystick



**Efficient cab option**  
with electrohydraulic multifunction joystick and armrest



**Exclusive cab option**  
with multipad control lever and electrohydraulic multifunction joystick (right-hand side)

### Factory fitted loader controls available

Models	Mechanical joystick control	Electrohydraulic controls
MF5608/5609/5610/MF5611/5612 Essential	•	–
MF5611/5612 Efficient	–	•
MF6600 Essential	•	–
MF6600 Efficient	–	•
MF7614	•	–
MF7700 Essential	•	–
MF7700 Efficient	–	•

• Available  
– Not applicable



# Options that fit your requirements perfectly

If your original purchase did not have a subframe and loader but over time you decide you need a tractor with loader capabilities, the dealer-fit option allows you to turn it into a fully functioning loader tractor simply and quickly. All you then have to do is decide which type of functionality best suits you.

## Loader Control System™ (LCS™) – optimising control and driving characteristics

The system features three new elements – valve, flat-faced couplings and joysticks.

At the heart of LCS™ is a unique valve program; the only valves in the world that have been developed for the specific functions and requirements of front loaders. This uncompromising attitude offers you many advantages: outstanding control, direct response and drivability through optimally-adapted flow – for every occasion and regardless of load weight. The valve is also energy efficient and therefore enables lower fuel consumption.

## Advantages of the LCS™ system

- ▶ Complete control of heavy loads thanks to the load-independent oil flow. The loader speed is always the same, no matter what load is carried on the implement
- ▶ Easier to perform multiple functions, such as lowering and crowding
- ▶ Energy-saving low pressure regeneration
- ▶ The cylinders are always filled with oil, which eliminates waiting time and cavitation
- ▶ Both lift and implement circuits feature a float position. In addition to improved driving benefits, this enables easy connection and disconnection of the loader and implement
- ▶ The compact design means that the valve is ideally placed, whilst maintaining the driver's vision



ElectroDrive LCS™



## ErgoDrive main functions:

- A. Lift
- B. Lower
- C. Fill
- D. Dump

## Combined functions:

- A/C. Lift and fill
- A/D. Lift and dump
- B/D. Lower and dump
- B/C. Lower and fill – bucket adjustment to horizontal position

01

The MF Professional 900 Series can benefit from a choice of three joystick options, all of which provide the operator with a high degree of control – it depends on the level of sophistication and type of control that's required.

## 01: ErgoDrive LCS™ Mechanical Joystick

ErgoDrive is a simple, mechanical, cable operated single lever control. Its design allows maximum ergonomics and efficiency.

- ▶ Cable control
- ▶ Suspension on/off
- ▶ Optional 3rd function
- ▶ Optional 4th function
- ▶ In cab position adjustment

## 02: EasyDrive LCS™ Electronic Joystick

An affordable electronic alternative to purely mechanical controls, performing the same functions but with the assistance of electronics – via a small, thumb-controlled joystick for effortless operation.

- ▶ 3rd and 4th function
- ▶ On/Off loader suspension
- ▶ Hydraulic implement locking function
- ▶ Float position both lowering and tilt (dump)
- ▶ Transport function
- ▶ Pressure relief function

02



## 03: ElectroDrive CDC™ Electronic Joystick

The new ElectroDrive CDC™ Joystick provides all the advantages of the two alternative options, but delivers significantly increased functionality.

- ▶ 3rd and 4th function
- ▶ Float position lift and tilt
- ▶ Quick select button: as standard on/off for loader suspension
- ▶ At the switch of a button: Loader suspension, transport mode, AAC, shake function or turtle function
- ▶ Live 3rd function option

03





# Letting you get on with things

High on productivity... low on down-time. Serviceability, low maintenance and ease-of-use of both tractor and loader have been key considerations in the design and construction of the MF900 Professional Series, making things simple, easy and quick.



**Convenient** tool storage area



**Easy servicing**

Outward-facing covered grease points are easily accessible.



**Easy implement changes that increase productivity**

Euro tool carrier with manual or hydraulic Q-Lock allows for quick implement changes.



**Worklights**

An optional set of LED worklights are available to give you maximum visibility at night, enabling you to work a longer day and increase productivity.



**Optional roof**

Visio roof with Falling Object Protection Structure (FOPS).\*



**The tool carrier**

This provides a secure link between the loader and implement, ensuring safety and security during all loader operations.

\*Depending on options.



**Fully compatible** with tractor front linkage for maximum outputs.



# MF900 X Utility Loaders for everyday operations

Utility loaders to complement MF tractors up to 100 hp.



**Striving to make the jobs you do  
everyday that little bit simpler.**

One thing we never do is compromise on quality – we only ever provide the best loaders with our machinery.

This new range of parallel loaders has been designed specifically for this range of tractors and is the genuine article. Overall design, efficient functionality and clever

little details enhance this high performance range of machinery to help you get the best out of your working day.

The MF900 X Series of utility loaders offers more benefits than any other range. Usage is simple, effective, enjoyable and the end result is maximum productivity and satisfaction.

MF900 X Utility Series Loaders

	Model	Type	Lift Height (m)	Capacity (kg)
MF2600	MF916 X	Self levelling	2.70	1,170
MF4608	MF926 X	Self levelling	2.90	1,800
MF4609/10	MF936 X	Self levelling	3.20	1,510
MF4707/08	MF936 X	Self levelling	3.20	1,510
MF400	MF946 X	Self levelling	3.50	1,560
MF5700	MF946 X	Self levelling	3.50	1,560
MF5608/09/10	MF956 X	Self levelling	3.70	1,600



Overseas model shown. Some features may not be available.



# Modern, simple, functional

Our tractor and loader combination works in harmony, integrating the most modern design and aesthetics with strength and reliability.

## Total vision

Enjoy an unrestricted view of the implement during many applications. The spacious cab and low cross tube on the MF900 X Utility Series loader ensures the view from the drivers seat is never impeded, making light work of loader operations.

All pipes and hoses are securely protected within the loader arm, minimising damage to the hydraulics whilst maximising visibility.

All pins are extremely strong with large dimensions, they are also zinc coated and can be lubricated. A pin lock eliminates the risk of the pins rotating.

## MF4600 Factory Joystick

Fitted as standard on all MF4600 models, this simple mechanical joystick provides fully integrated utility loader control.

- ▶ Cable control
- ▶ Optional 3rd function
- ▶ Fully integrated



## ErgoDrive LCS™ Mechanical Joystick

ErgoDrive is a simple, mechanical, cable operated single lever control. Its design allows maximum ergonomics and efficiency.

- ▶ Cable control
- ▶ Suspension on/off
- ▶ Optional 3rd function
- ▶ In cab position adjustment



# Quick and simple to connect and disconnect

No tools are required when connecting and disconnecting the loader which means that no time is wasted inbetween tasks.

For quick detaching, simply place the implement on the ground, lower the parking stands, unlatch the pins and disconnect the hydraulic and electrical connections between the loader and tractor.



Lower parking stands.



Unlatch the pins.



Base configuration without quick coupler.



# Delivering more with MF900 X Utility Loaders



## Adjustable guide

The guide indicates to the operator the position of the implement. It is easily adjustable and, for example, can show when the bucket or pallet forks are parallel to the ground.



## Subframe

The strong and reliable subframe design links the tractor and the loader. It allows a smooth and easy connection.



## Automatic implement locking with SafeLock

This smart safety function means that connecting the implement is always done with precision and accuracy. The SafeLock function ensures that the implement locking pins are always locked into position.



## Pivot pins

All pivot pins are fitted with greasers to reduce wear and increase life time of the loader.



## Versatile 3rd hydraulic function

This 3rd function maximises the output of the loader and the tractor.



## Piping

Piping is integrated to the chassis to avoid damage and improves design.



## Suspension system

New suspension system reduces constraints on the loader and on the tractors for optimum operator's comfort. The activation is manual, thanks to a tap close to the accumulator.

# MF900 Series Loader implements: the right tools for the job

The best loaders in the world deserve the best implements, purpose-designed for the machines that carry them and to suit the widest range of tasks. Here they are – the MF900 Series Loader implement range from the world's leading manufacturer.

Precision manufactured and purpose-designed to suit MF900 Series Loaders, this range of implements provides the widest choice available. These versatile, high quality implements developed through a rigorous R&D program, have been organised into three categories for easy reference: Bale handling, Buckets and Other implements.





## Bale handling

This comprehensive range of bale handling implements has been thoughtfully designed to provide safe, efficient and reliable operation through the complete spectrum of bale handling and distribution tasks, from field to yard. For square and round bale handling, this highly flexible range suits every situation and budget.



### Flexigrip

Perfect for the gentle handling of wrapped bales and 'end-on' stacking (up to three bales high), thus reducing the risk of air and moisture penetration into the bale.

Hydraulically operated arms provide independent locking for easy alignment.

- Bale sizes from 120 to 200 cm

### Square bale fork – Safety

Available in two widths and featuring vertically folding tines for additional safety during transportation and handling. The upper section is designed to eliminate bales falling back, after unloading at full height when reversing.

Optional back-rests and large-bag lifter also available.

- Available in two widths, 140 cm (2 – 5 tines) and 190 cm (5 tines)

### Square bale fork

Simple, robust, but ideal for both round and square bales.

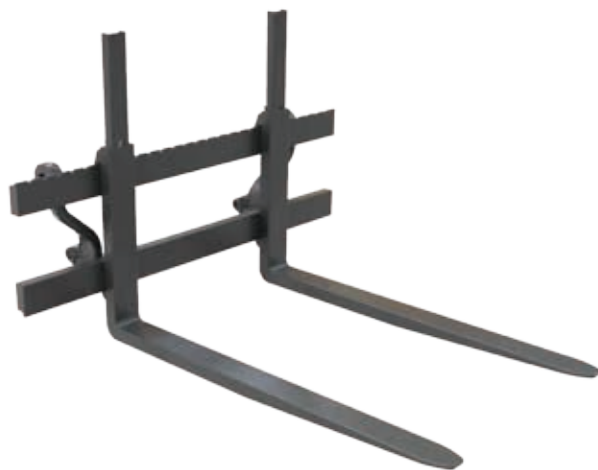
The spacing of the tines can be adjusted along the box section from 80 to 130 cm.

An optional U-shaped vertical rear extension can be supplied to help support the top bale.

- Width 140 cm

## Other implements

The best loaders in the world deserve the best implements, purpose-designed for the machines that carry them and to suit the widest range of tasks. Here they are – the MF900 Series Loader implement range from the world's leading manufacturer.



### Pallet forks

Depending on loader dimensions, pallet forks can be specified with either 97 cm forks (1,000 or 1,600 kg capacity) or 120 cm forks (2,500 kg capacity). The upper profile is manufactured in one piece and is able to be adjusted laterally to suit the load, which is distributed over a large area thanks to the wide load-bearing surface. This provides a very stable fork with immense strength.

## Buckets

All buckets are not created equal. The MF900 Series Loader buckets are simply better. The range consists of three series, to suit varying workloads, with all buckets characterised by a conical 'hopper-shaped' design and laser-cut ends for non-spill, non-drop ability.



### Series U

Light Utility bucket suited to the MF900 X Utility Series Loaders.

- Available in 210 cm

### Multipurpose bucket

A high quality versatile bucket built to achieve many tasks: standard bucket, hightip bucket, clamp, grading bucket.

- Available from 160 to 210 cm wide

### Series H

Soil buckets, the most popular and flexible in the range.

A short bucket base means these are well suited to heavier tasks.

- Available in five widths from 135 to 240 cm

Note: all volumes shown are heaped.

## Other implements



### Counterweight

An essential accessory, this high quality counterweight can be fitted and removed easily.

- Two sizes are available, 800 or 1500 kg maximum ballasted weight
- Supplied without ballast



# Specifications

## MF900 Professional Series Loaders

	Diagram reference	MF949	MF956	MF966	MF976	MF988	New Zealand only		
							MF941	MF951	MF961
Maximum lift height – at pivot pin* (m)		3.90	4.00	4.25	4.50	4.95	3.75	4.00	4.25
Maximum lift height – under level bucket* (m)	6	3.60	3.70	3.95	4.20	4.65	3.45	3.70	3.95
Lift capacity to maximum height at pivot pin** (kg)		1,890	2,060	2,440	2,490	3,070	2,150	2,310	2,710
Lift capacity to ground level at pivot pin** (kg)	1	2,220	2,520	2,790	2,990	3,930	2,810	2,920	3,220
Lift capacity to maximum height @ 800 mm from pivot pin** (kg)		1,600	1,720	2,120	2,120	2,770	1,500	1,640	1,970
Lift capacity to 1.5m height @ 800 mm from pivot pin** (kg)		1,720	1,930	2,250	2,370	3,050	1,560	1,680	1,980
Lift capacity to ground level @ 800 mm from pivot pin** (kg)	2	1,800	2,070	2,330	2,540	3,340	1,860	2,130	–
Roll-back force at ground level @ 800 mm**	3	2,830	2,810	3,360	3,870	4,460	2,800	2,840	3,360
Maximum dump angle at maximum height (degrees)	5	54	55	52	52	49	60	56	52
Maximum roll-back angle at ground level (degrees)	4	45	45	44	44	44	43	46	45
Lifting rams diameter (mm)		75/40	80/40	85/50	90/50	95/50	80/40	85/50	90/50
Tilting rams diameter (mm)		80/40	80/40	85/40	90/40	100/50	80/40	80/40	85/40
Weight – standard configuration (kg)		595	621	721	760	838	515	554	628

Loader Function Diagram



- 1 Lifting force at pivot pin  
2 Lifting force 800 mm from pivot pin

- 3 Max. roll-back force 800 mm from pivot pin  
4 Maximum roll-back angle at ground level

- 5 Maximum dump angle at maximum height  
6 Maximum lift height under level bucket

# Specifications

## MF900 X Utility Series Loaders

	Diagram reference	MF916 X	MF926 X	MF936 X	MF946 X	MF956 X
Maximum lift height – at pivot pin* (m)		2.9	3.10	3.40	3.70	3.90
Maximum lift height – under level bucket* (m)	6	2.7	2.90	3.20	3.50	3.70
Lift capacity to maximum height at pivot pin** (kg)		1,170	1,240	1,410	1,510	1,600
Lift capacity to ground level at pivot pin** (kg)	1	-	1,950	2,100	2,320	2,520
Lift capacity to maximum height @ 800 mm from pivot pin** (kg)		960	1,220	1,520	1,590	1,680
Lift capacity to 1.5m height @ 800 mm from pivot pin** (kg)		1,170	1,400	1,560	1,710	1,890
Lift capacity to ground level @ 800 mm from pivot pin** (kg)	2	-	1,580	1,660	1,850	2,080
Roll-back force at ground level @ 800 mm**	3	1,400	1,500	1,890	2,280	2,740
Maximum dump angle at maximum height (degrees)	5	47	50	50	49	46
Maximum roll-back angle at ground level (degrees)	4	46	42	44	42	43
Lifting rams diameter (mm)		55	60	65	70	75
Tilting rams diameter (mm)		65/40	65/40	70/40	75/40	80/40
Weight – standard configuration (kg)		340	360	390	420	440

- \* Height values for standard tractor (depends on tyres and equipments)  
\*\* lifting force at 195 bar/2,828 PSI  
– Not applicable



# Specifications

## Tractor/Loader Recommendations

### MF900 Professional Series Loaders

Models	MF949	MF956	MF966	MF976	MF988	New Zealand only		
						MF941	MF951	MF961
MF5608/09/10	•	•	–	–	–	•	•	–
MF5611/12	•	•	–	–	–	•	•	–
MF6612/13/14	–	•	•	–	–	–	•	•
MF7614	–	–	•	•	–	–	–	•
MF7714/15/16/18	–	–	•	•	–	–	–	•
MF7720/22/24/26	–	–	–	•	•			
MF8670/90	–	–	–	–	•			
MF8700	–	–	–	–	•			

### MF900 X Utility Series Loaders

Models	MF916 X	MF926 X	MF936 X	MF946 X	MF956 X
MF2600	•	–	–	–	–
MF4608	–	•	–	–	–
MF4609/10	–	–	•	–	–
MF4707/08	–	–	•	–	–
MF400	–	–	–	•	–
MF5608/09/10	–	–	–	–	•
MF5700	–	–	–	•	–

• Available  
– Not applicable







# **MASSEY FERGUSON**

**A world of experience. Working with you.**



[facebook.com/MasseyFergusonGlobal](https://facebook.com/MasseyFergusonGlobal)  
[twitter.com/AGCOcorp](https://twitter.com/AGCOcorp)  
[youtube.com/MasseyFergusonVideo](https://youtube.com/MasseyFergusonVideo)  
[blog: agcocorp.com](http://blog.agcocorp.com)

Every effort has been made to ensure that the information contained in this publication is as accurate and current as possible. However, inaccuracies, errors or omissions may occur and details of the specifications may be changed at any time without notice. Therefore, all specifications should be confirmed with your Massey Ferguson Dealer or Distributor prior to any purchase.



**MASSEY FERGUSON** is a worldwide brand of AGCO.



**MASSEY FERGUSON**